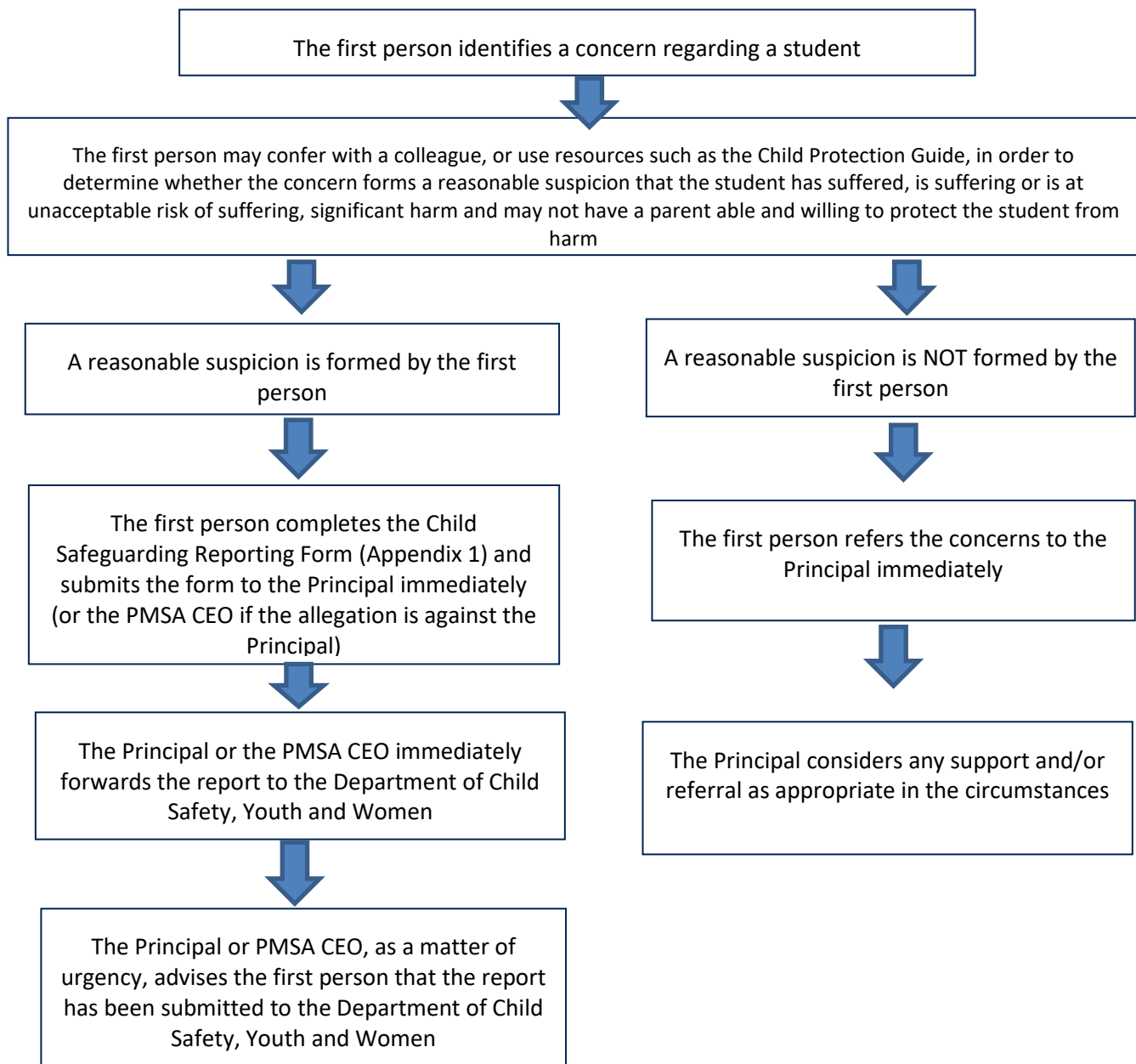


## Flowchart 3: Reporting Significant Harm to Child Safety Services



### IMPORTANT NOTICE

If there is a reasonable suspicion that the student has been sexually abused or is likely to be sexually abused by another person, then the processes as outlined in Flowchart 1 must also be followed, or Flowchart 2 if the first person is the Principal.

#### Mandatory Responsibilities for Teachers

If the staff member is a teacher, and the reasonable suspicion is that the student has suffered, is suffering, or is at an unacceptable risk of significant harm caused by physical or sexual abuse and may not have a parent able and willing to protect the student from the harm (a reportable suspicion under section 13E of the *Child Protection Act 1999* (Qld)), the teacher is responsible, as a matter of urgency, to ensure that the report has been submitted to the Department of Child Safety, Youth and Women, unless they become aware, or reasonably suppose, that the matter has already been brought to the attention of the authorities.

If a teacher forms a reportable suspicion and is not able to progress a report through the process detailed in the Flowchart above, they are able to meet their mandatory reporting obligation through reporting directly to Department of Child Safety, Youth and Women via the online reporting form:

<https://secure.communities.qld.gov.au/cbir/ChildSafety>